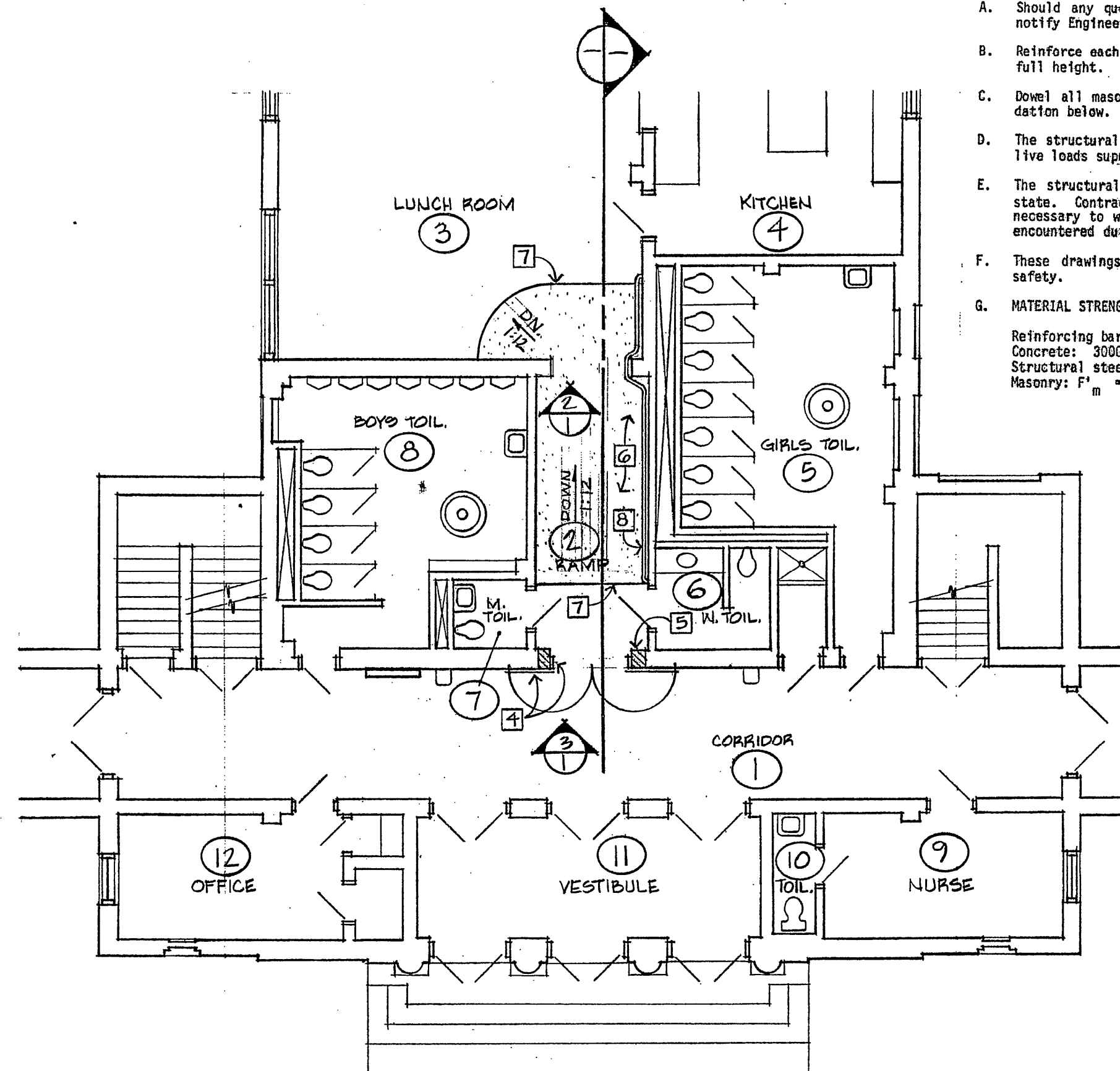
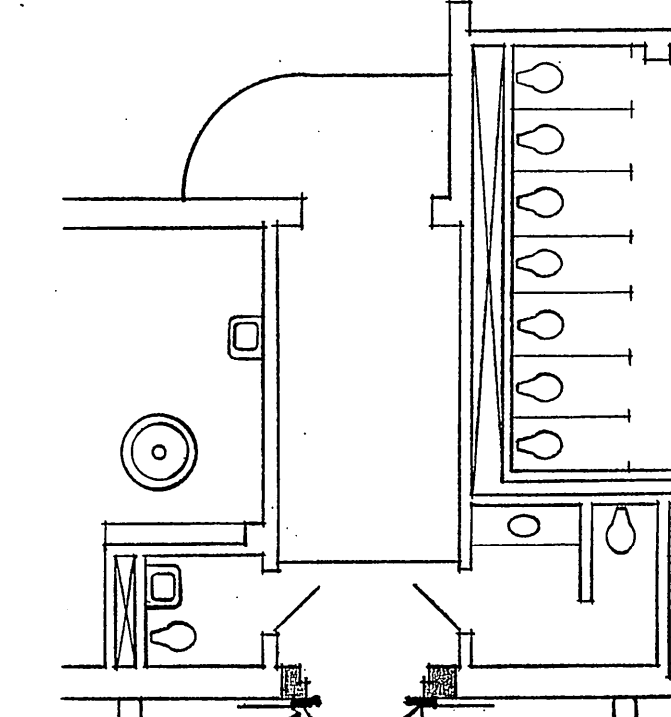


PARTIAL DEMOLITION PLAN
SCALE: 1/8"=1'-0"



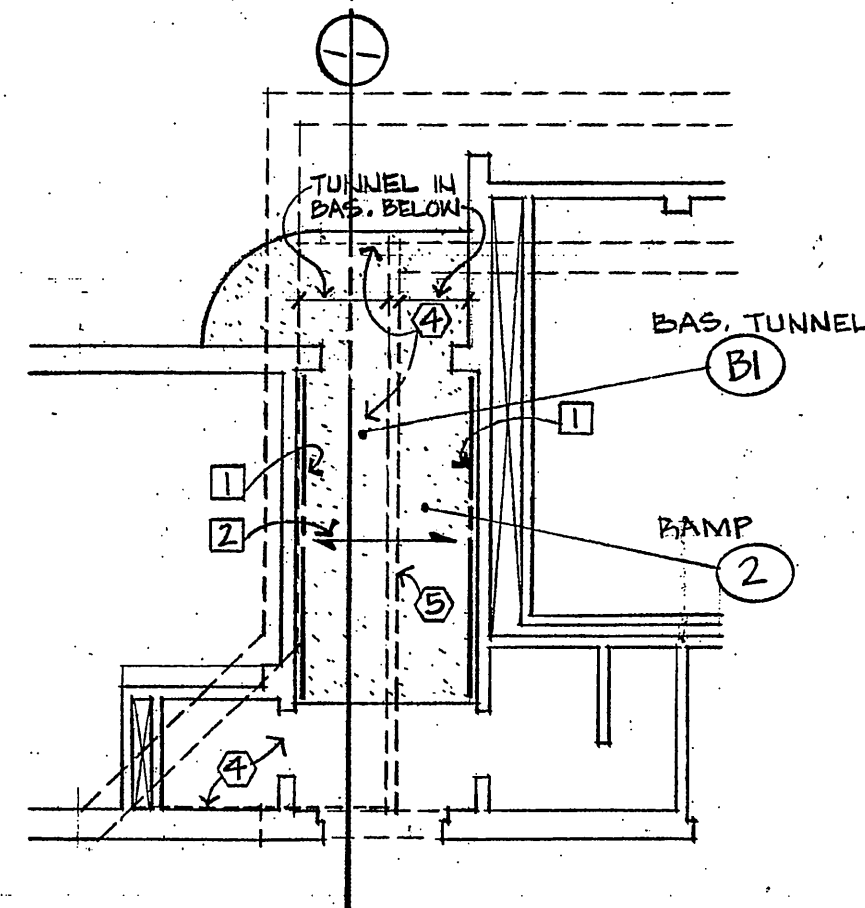
PARTIAL FLOOR PLAN
SCALE: 1/8"=1'-0"



COMBINATION DOOR HOLDER/CLOSURE WITH AN IONIZATION SMOKE DETECTOR, SIMILAR TO SIMPLEX #208B-952B, FURNISHED & CONNECTED BY E.C., G.C. SHALL INSTALL 2 THUS

SURFACE WIRE MOLD - CONNECT TO FIRE ALARM PANEL

PARTIAL ELECTRICAL PLAN
SCALE: 1/8"=1'-0"



PARTIAL STRUCTURAL PLAN
SCALE: 1/8"=1'-0"

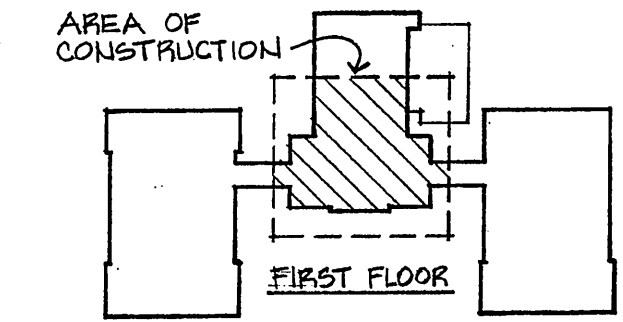
GENERAL DEMOLITION NOTES

- 1 Remove existing hollow metal doors and frame. Reuse doors, frame, and hardware. Verify anchorage of existing frame in masonry wall. Provide new frame if existing frame can not be salvaged.
- 2 Remove existing display case and reinstall.
- 3 Remove existing structural floor slab and steps. Saw cut slab as close to wall as possible. Chip or grind exposed concrete above new ramp floor surface smooth and flush with existing wall finish, both walls of ramp.
- 4 Remove existing tunnel ceiling in basement to tunnel corner.
- 5 Remove existing masonry tunnel/air shaft divider partition to tunnel corner.
- 6 Scarify existing floor slab a minimum of 1" deep with saw blade at bottom of new ramp and remove existing concrete.
- 7 Remove a portion of the existing wall at door opening head and remove existing door lintel. Contractor to reuse existing door lintel at new opening head if it is a steel unit. Create a new opening head for 7'-0" head room. Verify existing wall construction as necessary and above opening as required. Fill wall back with solid masonry and patch plaster wall finish to match existing, both sides of wall. Paint patched wall, color to match existing.
- 8 Cut bottom of existing marlite board to match slope of existing floor and remove excess board. Scrap or grind existing wall smooth for new base, both walls of ramp. Paint 6" base area of existing wall, black.

GENERAL PLAN NOTES

- 1 L 3 x 3 x 1/4 support angle with 3/4" expansion anchor bolts at 18" on center.
- 2 5" concrete slab with #4 reinforcing bars at 12" on center each way on 9/16" x 28 gauge rib-form deck. Provide temporary shoring at mid-span during construction until concrete has set.
- 3 Three L 4 x 4 x 1/4 angle lintel with 6" and bearing. Grout solid to masonry. Shop weld lintel unit. Contractor to reuse existing lintel if it is a steel unit. (See General Demolition Note No. 7.)
- 4 Reused existing hollow metal doors, frame, and hardware. Provide new frame if necessary (See General Demolition Notes). Install new combination door holder/closure devices on both doors. Devices to be furnished and wired by Division 16. Adjust existing door astragal or provide new for proper closing and latching of doors.
- 5 Concrete block wall fill-in. See Detail 4/1 for finish.
- 6 New 12" resilient floor tile at new ramp slab to match tile in Corridor No. 1.
- 7 2" wide black resilient tile delineation strip at top and bottom of ramp.
- 8 1 1/4" steel pipe handrail, 1 1/2" clear from wall. Paint rail black.

GENERAL ABBREVIATIONS	
ARCH	Architectural
BD	Board
BLK	Block
BOT	Bottom
BRG	Bearing
BRK	Brick
CLG	Ceiling
COL	Column
CONC	Concrete
CONT	Continuous
CONTR	Contractor
DEMO	Demolition
DK	Deck
DN	Down
DTL	Detail
EA	Each
EXP. A.B.	Expansion Anchor Bolt
EC	Electrical Contractor
EJ	Expansion Joint
ELEV	Elevation
ELEC	Electrical
EMBED	Embedment
EQUIP	Equipment
EW	Each Way
EXIST	Existing (Verify)
FFE	Finished Floor Elevation
FDN	Foundation
FLR	Floor
GYP	Gypsum
HORIZ	Horizontal
HM	Hollow Metal
JST	Joist
LLH	Long Leg Horizontal
LLV	Long Leg Vertical
LOC	Location
MAS	Masonry
MAX	Maximum
MECH	Mechanical
MIN	Minimum
MTL	Metal
NS	Non-Shrink
NTS	Not to Scale
OC	On Center
OPNG	Opening
PLAS	Plaster
REFIN	Reinforce
REQD	Required
REV	Reversed
SIM	Similar
SOG	Slab on Grade
STL	Steel
STRUC	Structural
TPG	Topping
TYP	Typical
UNO	Unless Noted Otherwise
UNEX	Unexcavated
VERT	Vertical
W	Wood
WD	Wood



KEY PLAN
NO SCALE

These drawings do not include necessary components for construction safety.

I hereby certify that this plan, specification, or report was prepared by me or under my direct supervision and that I am a duly Registered **ENGINEER** under the laws of the State of **MINN.**
Date **7-25-86** Reg. No. **11101**

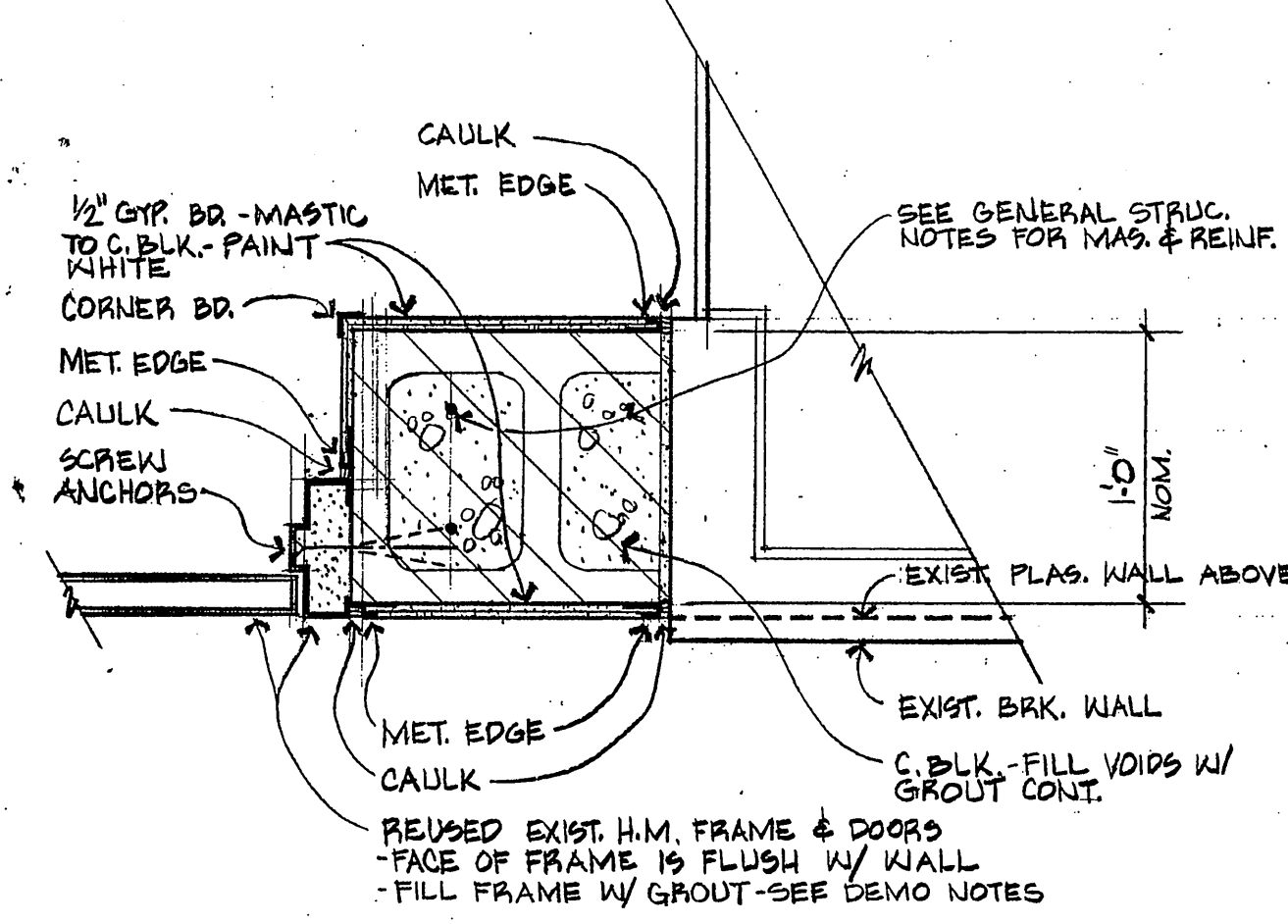
PARTIAL FLOOR PLANS

KASSON ELEMENTARY SCHOOL
KASSON, MINNESOTA
HANDICAP ACCESS RAMP

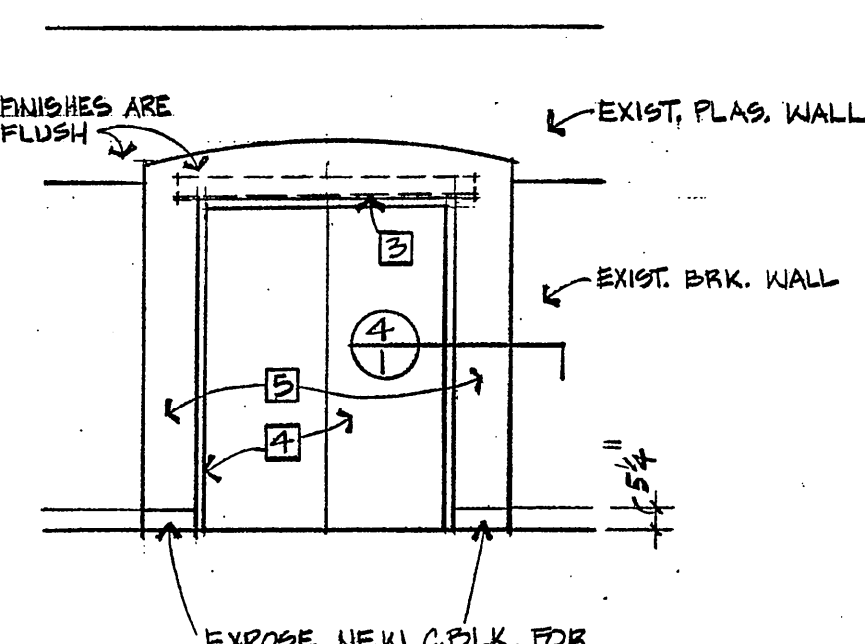
TSP Rochester

TSP One, Inc.
1500 Highway 52 North
Rochester, MN 55901
(607) 288-8155

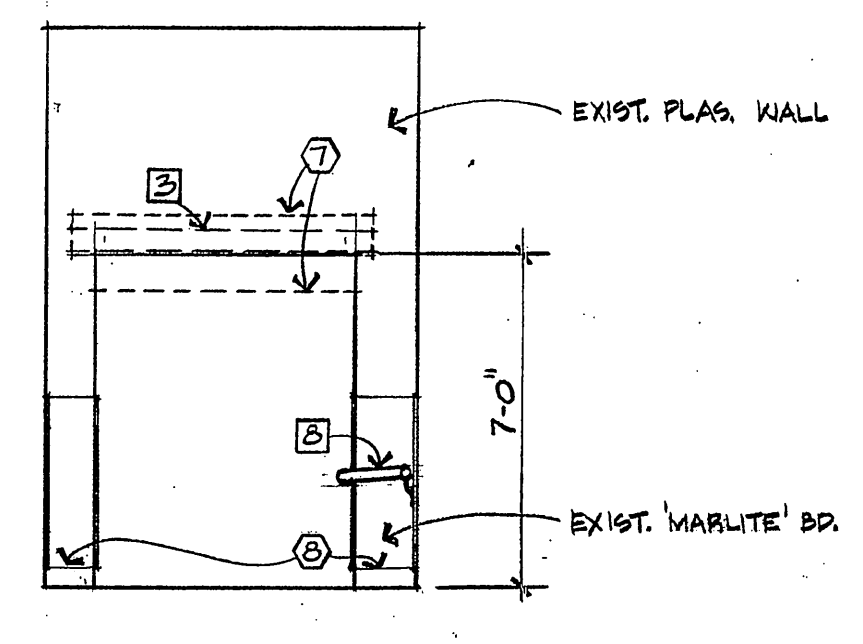
Project No. **2979.4B** SHEET NO. **1**
Drawn By **MEC**
Checked By **DGR**
Date **7-25-86**
Copyright © **TSP** OF: **1**



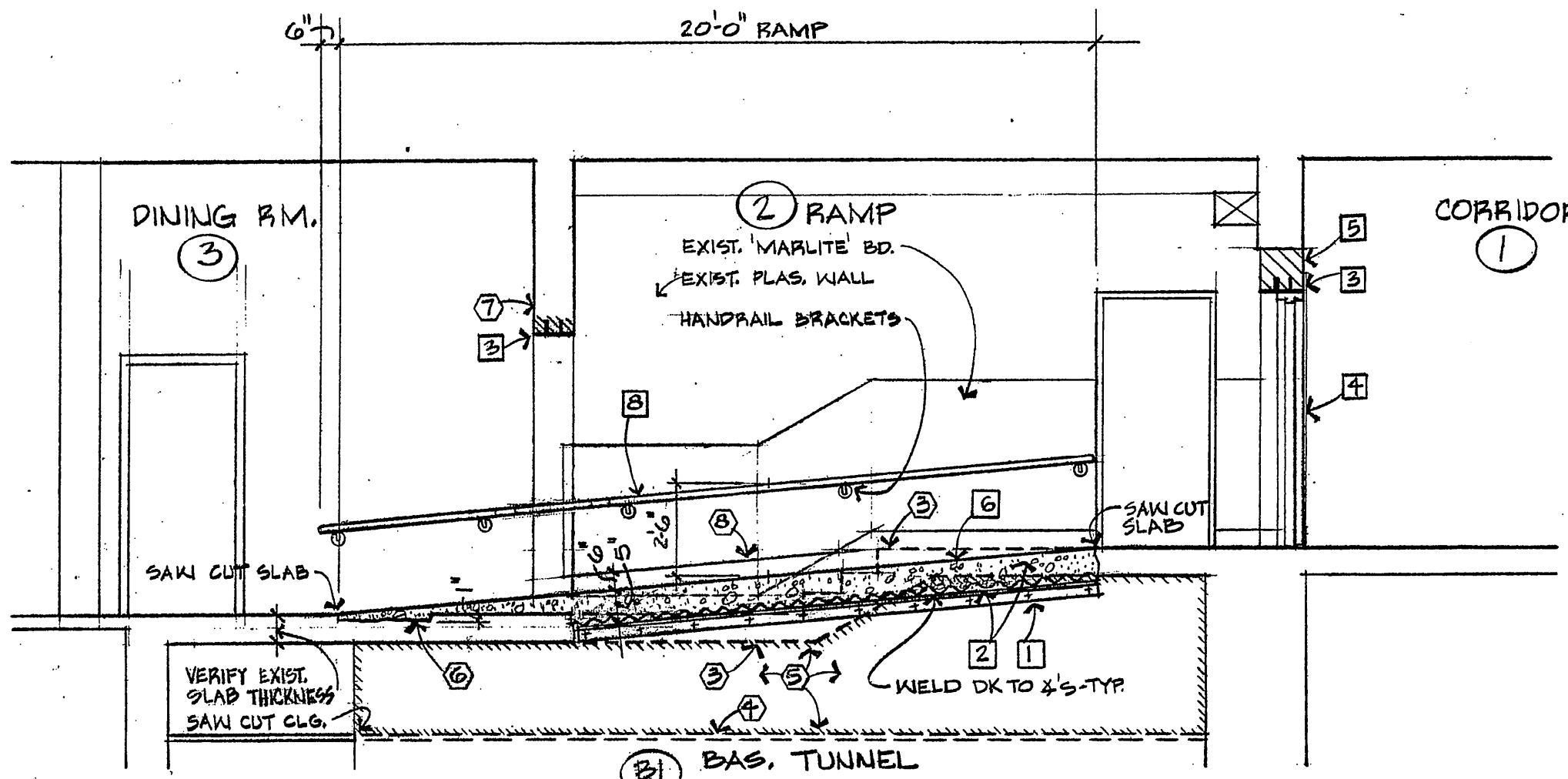
4 DOOR DTL
SCALE: 1/2"=1'-0"



3 DOOR ELEV.
SCALE: 1/4"=1'-0"



2 OPNG. ELEV.
SCALE: 1/4"=1'-0"



1 RAMP SECTION
SCALE: 1/4"=1'-0"