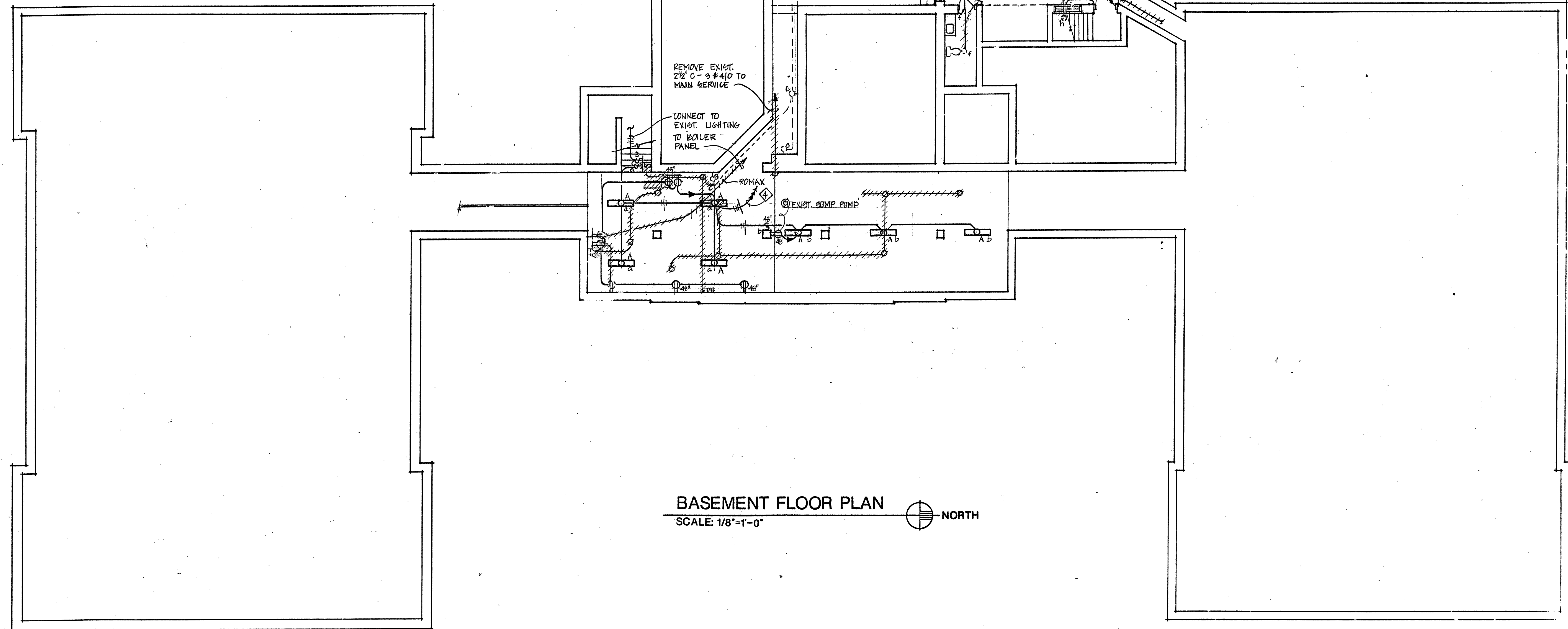


| ELECTRIC MOTOR SCHEDULE | | | | | | | | | | | | |
|-------------------------|-------------|---------------|-------|-----|---|--------------|------|----------------|---------|---------------------|-----------|--|
| MTR. NO. | LOC. | DESCRIPTION | HP | V | Ø | STARTER | | | CONTROL | | WIRE SIZE | REMARKS |
| | | | | | | TYPE | SIZE | CONTROL DEVICE | BY | TYPE | | |
| 1 | BOILER ROOM | CIRC. PUMP | 1 1/2 | 240 | 3 | C5/FP | 0 | H.O.A. | 16 | T-STAT | 15 | #12 |
| 2 | BOILER ROOM | CIRC. PUMP | 1 1/2 | 240 | 3 | C5/FP | 0 | H.O.A. | 16 | T-STAT | 15 | #12 |
| 3 | CLASS ROOMS | FAN COIL | 270W | 120 | 1 | S.P.S.W. | - | - | 16 | T-STAT | 15 | #12 |
| 4 | ENTRY CORR. | UNIT HEATER | FR | 120 | 1 | S.P.S.W. | - | - | 16 | AQUA | 15 | #12 |
| 5 | CAFETERIA | FAN COIL UNIT | 225W | 120 | 1 | S.P.S.W. | - | - | 16 | P.E. | 15 | #12 |
| 6 | GYM STORAGE | FAN #1 | 1/4 | 120 | 1 | MSS | - | H.O.A. | 16 | INTERLOCK W/ AHU #1 | 15 | #12 |
| 7 | GYM STORAGE | AHU #1 | 2 | 240 | 1 | 30 AMP CS/FP | 0 | H.O.A. | 16 | P.E. | 15 | #10 FUSE AS PER MANUFACTURERS RECOMMENDATION |
| 8 | BOILER ROOM | CIRC. PUMP | 1 1/2 | 240 | 3 | 30 AMP CS/FP | 0 | H.O.A. | 16 | T-STAT | 15 | #12 |
| 9 | BOILER ROOM | UNIT HEATER | FR | 120 | 1 | S.P.S.W. | - | - | 16 | AQUA | 15 | #12 |



- ELECTRICAL NOTES:
1. PROVIDE 30A FUSED DISCONNECT FOR TEMPERATURE CONTROL AIR COMPRESSOR. VERIFY LOCATION WITH MECHANICAL CONTRACTOR.
 2. TEMPERATURE CONTROL PANEL BY OTHERS. PROVIDE DEDICATED 20A 1P BREAKER IN BOILER ROOM PANEL. VERIFY LOCATION WITH MECHANICAL CONTRACTOR.
 3. RECEPTACLE FOR AIR DRYER, VERIFY LOCATION WITH MECHANICAL CONTRACTOR.
 4. CONNECT TO BOILER ROOM PANEL, PROVIDE 20 AMP, 1 POLE CIRCUIT BREAKER. NUMBER AS INDICATED.

BASEMENT FLOOR PLAN
SCALE: 1/8"=1'-0" NORTH

I hereby certify that the plan, specification, or report was prepared by me or under my direct supervision and that I am a duly Licensed Professional Engineer under the laws of the State of Minnesota.
 Date: 1-9-88 Reg. No. 5112

KASSON ELEMENTARY SCHOOL
 HEATING RENOVATION PHASE 3
 KASSON, MINNESOTA

| | |
|----------|--------|
| date: | 1-9-88 |
| job no.: | 2973 G |
| drawn: | REA |
| checked: | CEM |

TSP Rochester
 150 S. Washington St.
 Rochester, MN 55904
 507/281-1865

sheet: E1 of 3

NOTE: WORK INVOLVED IN PHASE 3 CONSTRUCTION IS LIMITED TO AREA SHOWN WITHIN CLOUD UNLESS INDICATED OTHERWISE IN SPECIFICATION OR NOTES